

Summary of Ysgol Bro Cinmeirch's Evaluation and Development Plan



As a school we constantly review where we are as a school and how we can continuously improve to ensure that your child gets the best education here at Ysgol Bro Cinmeirch. Through the process of self-evaluation and continuous review across the school we identify our key priorities for improvement.



Our Strengths

Leadership

- The school's priorities have been clearly shared with our stakeholders through our school newsletter.
- All members of staff are leading a school council i.e Eco Committee, School Council, Wellbeing Officers and so on and meet regularly and arrange events within the school.
- Strong pupil voice within the school, including our monitoring processes i.e learners are able to do a tour around the school identifying strengths and areas for improvement and have ample opportunities to scrutinise books with staff and governors throughout the year.
- Collaborate as a team and work promptly to the targets set together.

Teaching and learning

- Wide opportunities throughout the year for staff, learners and the governors to come together to scrutinize books, school tours and opportunities to have further discussions.
- There has been a continuous and strong focus on developing Literacy skills through discussion topics, artist of the month, language pattern etc, this has also been shared in our weekly newsletter.

Previous Success

Developing learners' Welsh oral skills.

Discussion topics were created weekly and the learners enjoyed being paired up with different members within the school.

A number of opportunities are taken up during the year to celebrate Welsh events such as Shwmae Sumai day, St David's Day Parade, Urdd's Eisteddfodau, Cymru Music Day and much more.

Improve the quality of feedback and marking.

Books were scrutinized with our GwE consultant, Llŷr Gilmor, governors, learners and the staff to discuss the strengths and areas for improvement of our books.

We worked on consistency across the school by re-creating the marking code, marking colours, ensuring a strong element of self assessment, marking structure and the learners' individual targets.

Developing a whole school approach to wellbeing. Develop a valuable health, wellness and physical curriculum across the school. Develop the restorative strategy throughout the school so that it is central to the school's inclusive ethos.

Through the period dignity grant we have bought into the 'Jigsaw' scheme for a year. There are resources, lessons and characters to facilitate the Relationship and Sexuality Education lessons.

Growth mindset work across the school.

Curriculum

- We have made effective use of grants i.e Edwina Trust for Scientific resources, money towards sheds to create an outdoor area for KS2.
- We have made effective use of our staff this year by using their expertise throughout the school i.e FPH staff teaching Science in the outdoors with KS2 pupils.
- Staff have attended various courses and worked with other schools in order to gain a better awareness of the Curriculum.
- Newsletters ensure a good understanding of school events and provide opportunities to discuss issues further.

Wellbeing, Equity and Inclusion

- Almost every teaching member has attended the 'Relationship and Sexuality Education' training during the year and has enabled us to plan and collect resources appropriately.
- The School Council arrange days to celebrate within the school to ensure equality such as Owain Glyndŵr day, Show Racism the red card day and so on.
- Pupil's have learnt to use their voice within the councils and able to arrange days and events within the school to help children learn about their wellbeing and the wellbeing of others.

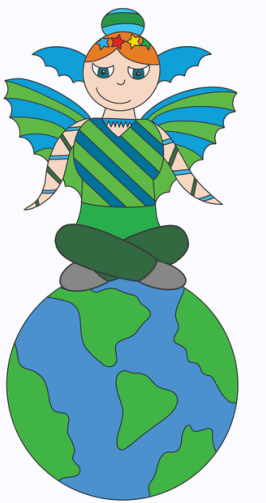
Ysgol Bro Cinnmeirch's Priorities

This is an overview of the areas of school development that we will focus on during the 2024-2025 academic year to ensure that we continue to provide the best for our pupils.

1

Respond to Denbighshire's Welsh language strategy for promoting Welsh language education alongside the cluster.

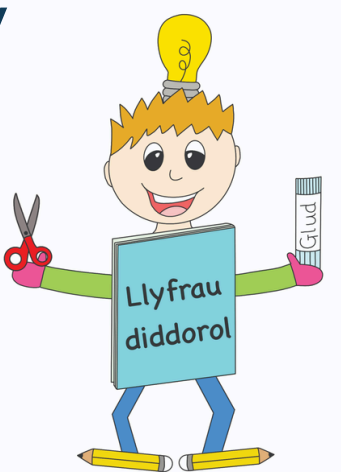
- Increase the use of Welsh outside the classroom.
- Developing learners' Welsh oral skills.



2

Improve Welsh reading proficiency throughout the school by raising the profile of reading, increasing family engagement and improving results.

- Invest in appropriate Welsh reading books.
- Create attractive and inspiring reading corners that foster a culture of reading.



3

Further improve the provision and develop a culture of independent learning.

- Further enrich the outside area as a learning resource for KS2.
- Continue working on class structures and the use of '3 before me' in class.



4

Improve how the school record attendance including recording and taking steps to improve the school's punctuality.

- Ensure that attendance/punctuality is recorded correctly on SIMS.
- Create an attendance spreadsheet and update parents termly.

